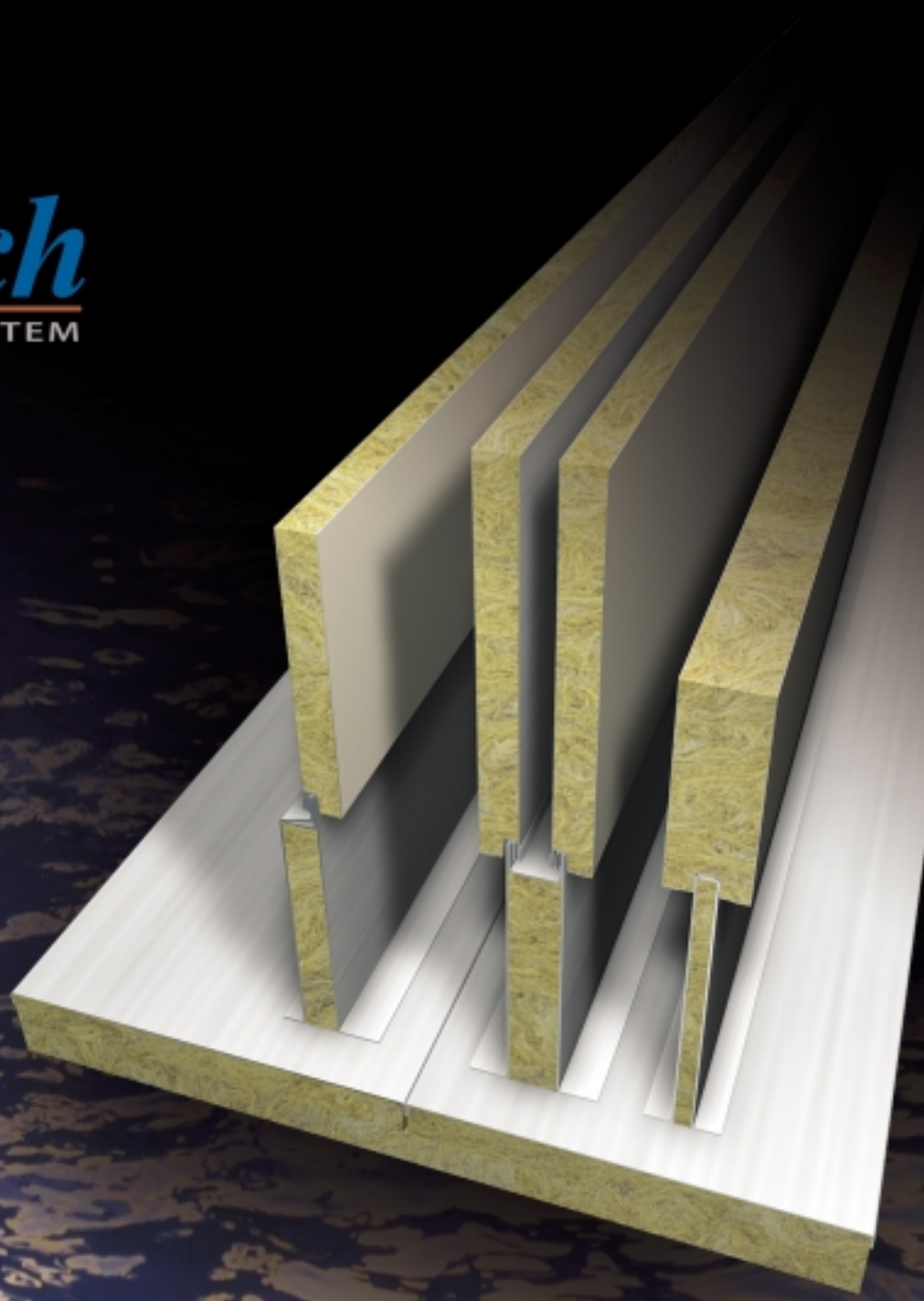
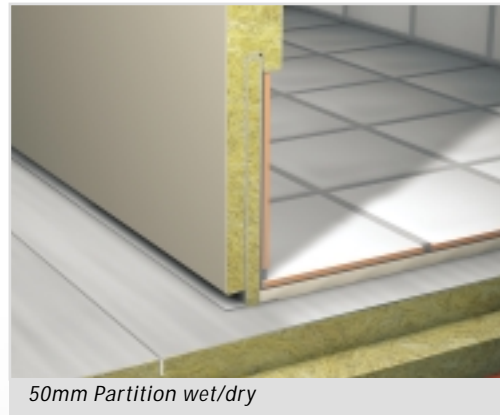


Wet Skirting type CWS

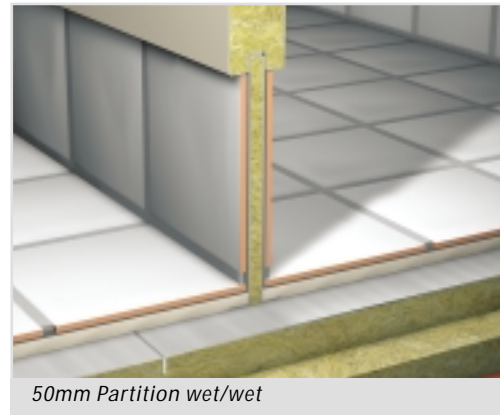
Contech

MARINE PANEL SYSTEM

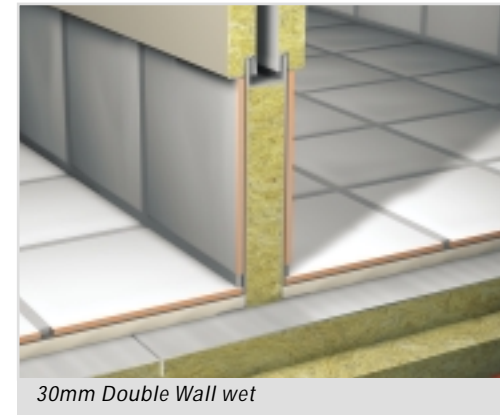




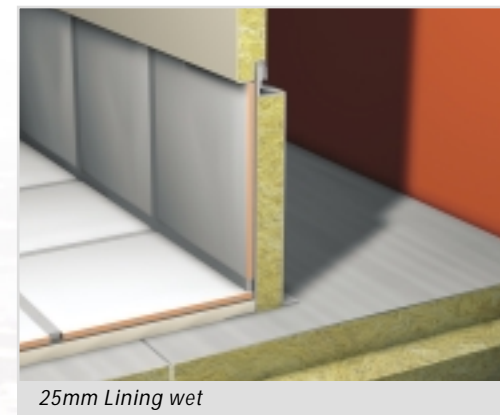
50mm Partition wet/dry



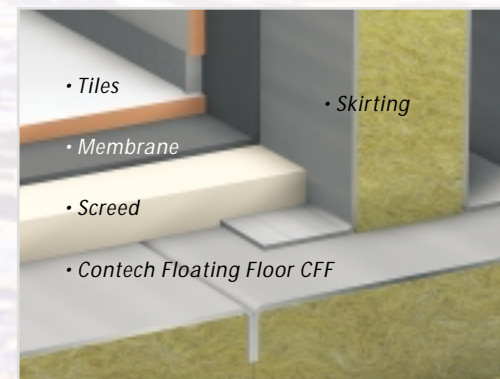
50mm Partition wet/wet



30mm Double Wall wet



25mm Lining wet

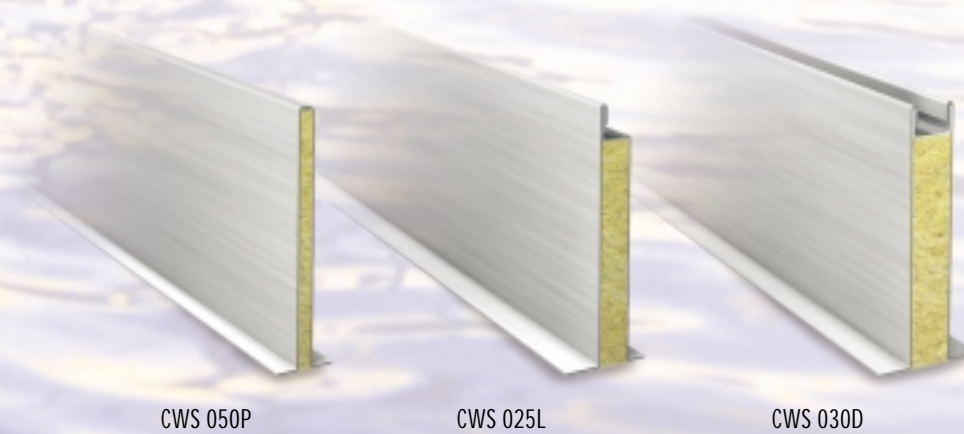
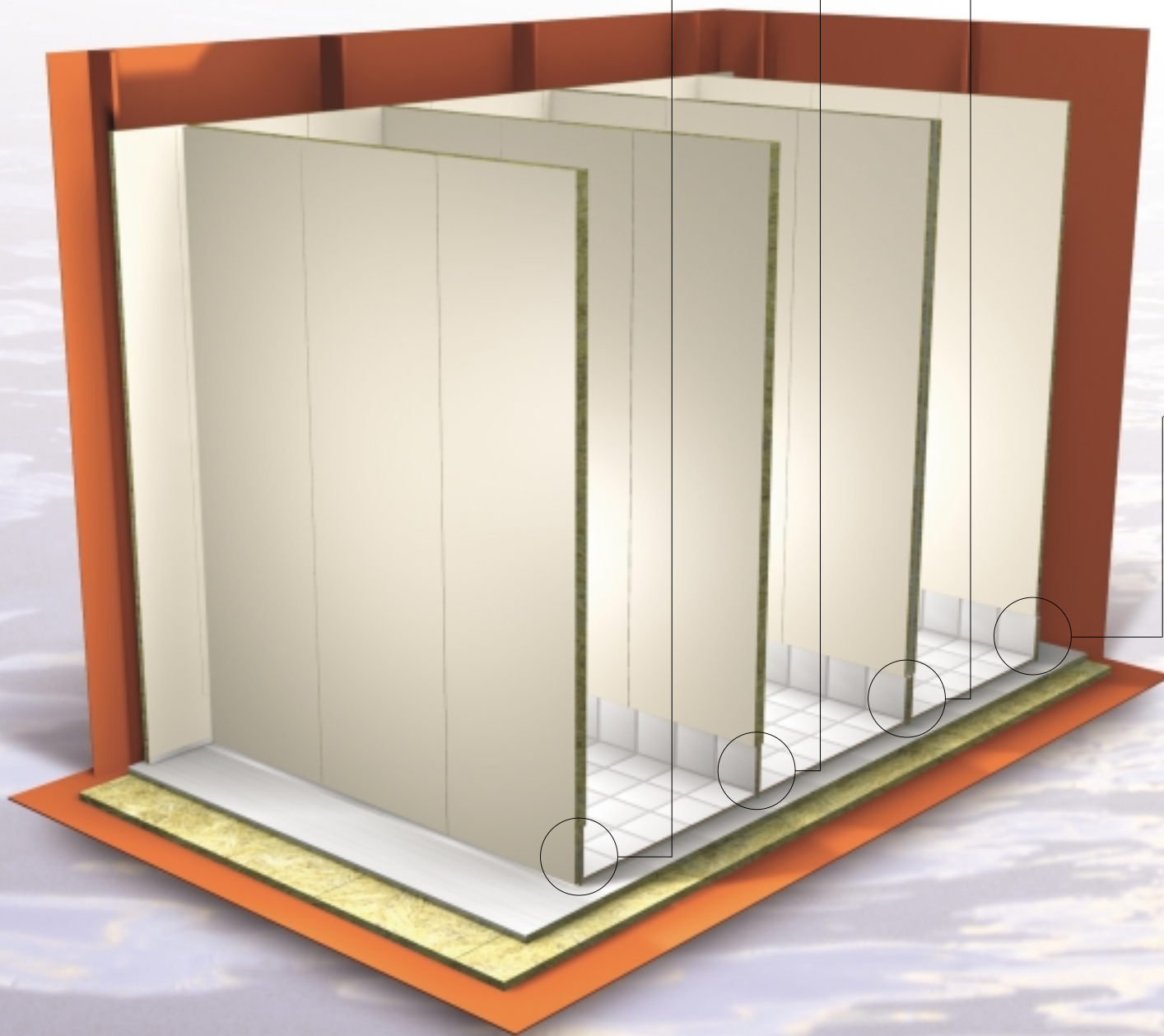


- Tiles
- Membrane
- Screed
- Contech Floating Floor CFF
- Skirting

Contech wet skirting is designed to prevent structural sound penetration.

Easy installation by the carpenter on top of floating floor.

| PROFILES | CWS 025L | CWS 030D | CWS 050P |
|------------------|----------------------------------|----------------------------------|----------------------------------|
| Material 1,5mm | El.galv. AISI 316L AL 5052 | El.galv. AISI 316L AL 5052 | El.galv. AISI 316L AL 5052 |
| Insulation | Paroc 150kg/m ³ | Paroc 150kg/m ³ | Paroc 150kg/m ³ |
| Length | 2000-2500mm | 2000-2500mm | 2000-2500mm |
| Height | 100-500mm | 100-500mm | 100-500mm |
| Width | | 30-100mm | |
| Weight (H=200mm) | 10 kg/m | 12 kg/m | 8 kg/m |



CWS 050P

CWS 025L

CWS 030D

Reference List

Offshore

| | | |
|------------|---------|----------------------------|
| Kvitebjørn | Statoil | Leirvik Technology Modules |
| Stena Don | Statoil | Kvaerner Warnow |
| Grane | Hydro | R&M Industrier |

Vessels

| | | |
|-------------|----------|-------------------------|
| Polarbjørn | Hull 076 | Havyard Leirvik |
| | Hull 258 | Ulstein Verft |
| Normand | Hull 258 | Ulstein Verft |
| | Hull 260 | Ulstein Verft |
| Talbor | Hull 21 | Fitjar Mek. Verksted |
| Endre Dyrøy | Hull 22 | Fitjar Mek. Verksted |
| | Hull 17 | Fitjar Mek. Verksted |
| | Hull 31 | Myklebust Mek. Verksted |

Other Products

Technical Lining

Wall Panels

Ceiling

A & B Doors

Prefabricated Wet Rooms

Contech's modern manufacturing facilities are conveniently located in Southern Norway

Contech AS
Bedriftsveien 16
N-4841 Arendal
Norway
Tel: +47 37 05 96 50
Fax: +47 37 05 96 51
e-mail: mail@contech.no
www.contech.no